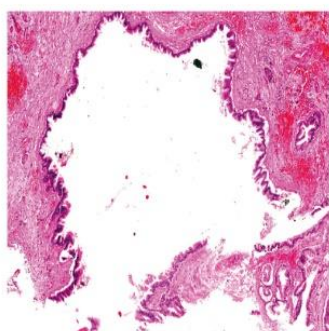
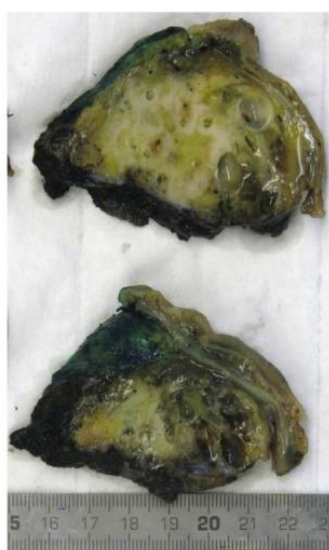


Premalignant pancreatic lesions - a missed condition?



Friday March 11th, 2016, IDA Mødecenter, Kalvebod Brygge 31-33

Agenda

13.00 - 13.30 **Registration and sandwich**

13.30 - 13.35 **Welcome**

*/Professor, MD, PhD Asbjørn Mohr Drewes,
Aalborg University Hospital
/Product Manager, Mylan EPD*

Chairman: Senior registrar, PhD Maiken Thyregod Jørgensen,
Odense University Hospital

13.35 - 14.20 **"Pathological features of premalignant pancreatic lesions:
PanINs and mucinous-cystic neoplasms"**

*/Consultant, lecturer, Ph.D. Sönke Detlefsen
Department of Clinical Pathology, Odense University Hospital*

14.20 - 14.35 **Break**

Chairman: Consultant, PhD Camilla Nøjgaard,
Copenhagen University Hospital Hvidovre

14.35 - 15.20 **"IPMN and other premalignant lesion in pancreas"**

*/Professor, MD Giovanni Morana, Head of Radiological Dept,
General Hospital Ca' Foncello, Italy*

15.20 - 15.35 **Break**

Chairman: Professor, MD, PhD Michael Bau Mortensen,
Odense University Hospital

15.35 - 16.20 **"The role of surgery in premalignant lesions of the
pancreas - when to operate and when not to"**

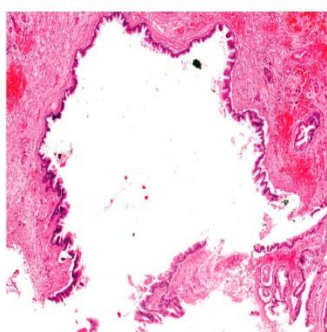
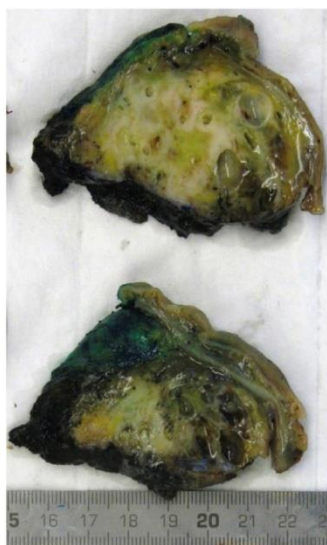
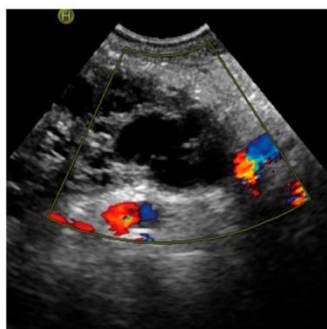
*/Professor, MD, Stefan Fritz, Department of General,
Visceral and Transplantation Surgery,
University of Heidelberg, Germany*

16.20 - 16.35 **Break**

Chairman: Consultant, Ph.D. Claus Fristrup,
Odense University Hospital

16.35 - 17.20 **Clinical dilemmas (Cases)**

17.20 - 17.35 **Break**



Chairman: Professor, MD, PhD Asbjørn Mohr Drewes,
Aalborg University Hospital

17.35 - 18.35 Free Papers

Stefan Haraldsson, Hvidovre Hospital

Extracorporeal shock wave lithotripsy for Chronic Calcifying Pancreatitis – a retrospective single center study

Stine Dam Henriksen, Aalborg Hospital

DNA hypermethylation as blood-based marker for pancreatic cancer

Bonna Leerhøy, Bispebjerg Hospital

Effect of body weight on fixed dose of diclofenac for the prevention of post-endoscopic retrograde cholangiopancreatography pancreatitis

Adnan Madzak, Aalborg Hospital

Semi-automatic quantification of exocrine pancreatic function by secretin-stimulated MRI in chronic pancreatitis and healthy subjects

Søren S. Olesen, Aalborg Hospital

Opioid treatment and malnutrition are associated with increased hospitalisation rates in chronic pancreatitis outpatients

Mikkel Werge, Hvidovre Hospital

Fungal infections in patients with walled-off pancreatic necrosis

18.35 - 18.45 Closing remarks

*/Professor, MD, PhD Michael Bau Mortensen,
Odense University Hospital*

/Product Manager, Mylan EPD

18.45 Dinner

Arrangementet vil blive anmeldt til ENLI inden dets afholdelse, og det er efter arrangørens opfattelse i overensstemmelse med reglerne på området, selv om arrangementet ikke på forhånd er godkendt af ENLI.